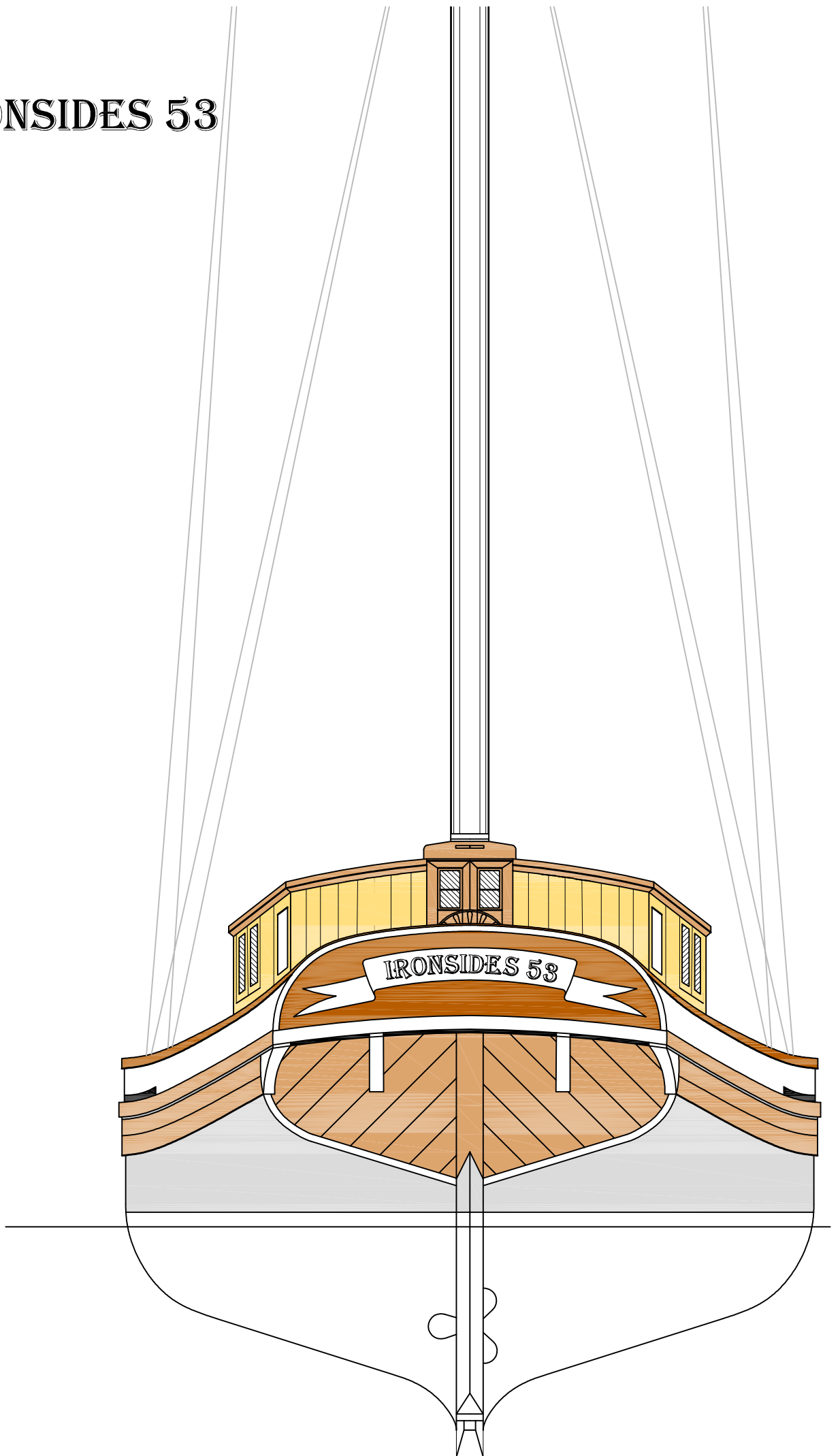


# IRONSIDES 53



*Dear sirs*

*Ironsides* - 53 yacht is designed for people with good taste who value reliability, safety and comfort. It is not a yacht in a general sense, but a ship and a home for comfortable year-round living of family of four.

Reliable steel hull with bilge plating thickness 20-50% more than required by the Construction Rules, shallow draft and prolonged keel line make it possible to moor the yacht near virtually any pier, in any canal or river. The yacht may spend winter in ice conditions and will still remain a warm and cozy home.

The hull is made of steel, but everything else - anything you can touch - is boarded to resemble classical sailing ship construction.

Spacious main room, big kitchen, two refrigerators, sauna for two, master bedroom, two WCs, separate chartroom also serving as an entrance hall, two big storerooms - all this shall provide you with necessary comfort in a long journey. Height of the rooms is 2.1 meters. The sauna works on electricity, is autonomous and uses 11 kW onboard diesel generator. During the journey the sauna may serve as an additional cabin, e.g. as a room for children. The vessel is equipped with its own automatic washing machine. Heating is provided by a *Webasta* diesel heater, a backup heating system uses electricity.

The yacht will be manufactured with three harness types:

1. Topsail schooner - for classical sail ship enthusiasts and experts.
2. Simplified gaff-headed staysail schooner, as shown on a picture.
3. Bermuda schooner with modern masts and sails, styled as a gaff-headed harness.

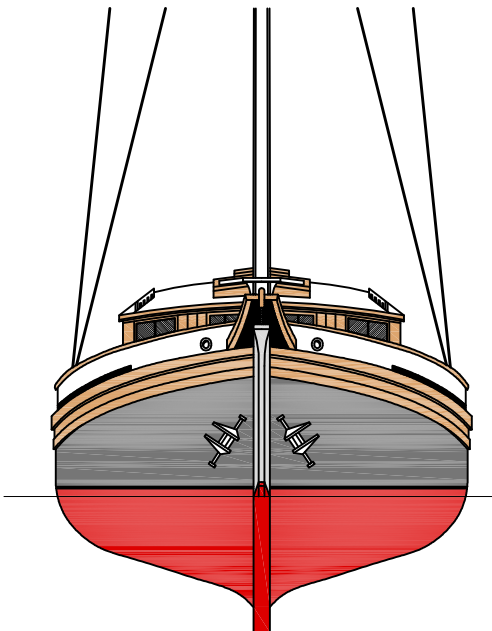
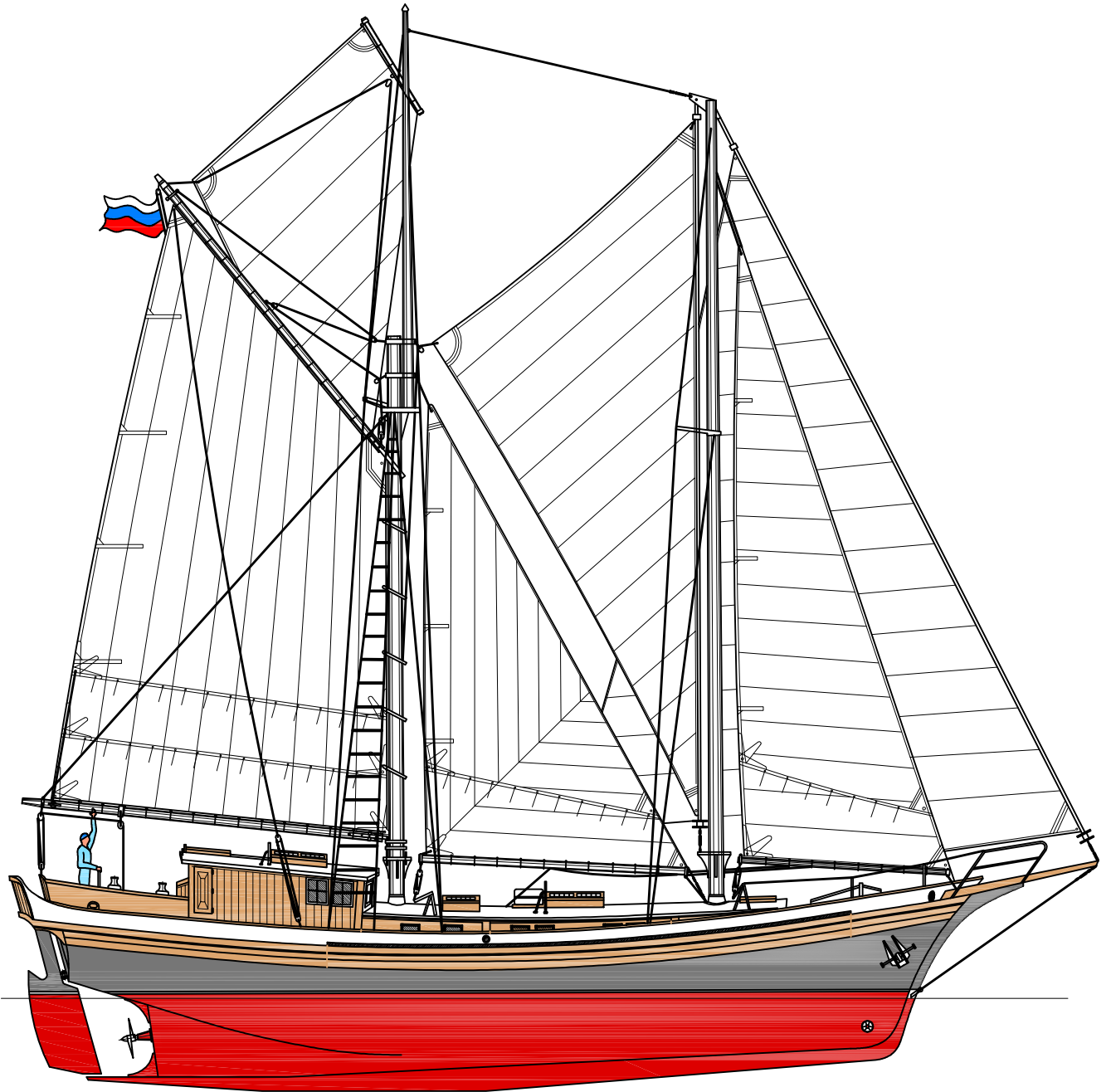
All these harness types include mechanized equipment that allows one or two persons to effectively control the ship.

The vessel has two control posts and is equipped with a transverse bow propeller.

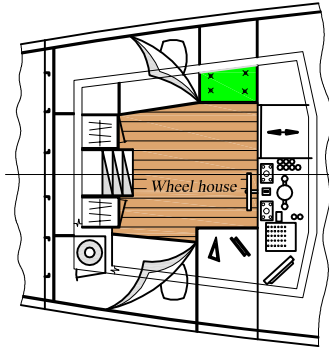
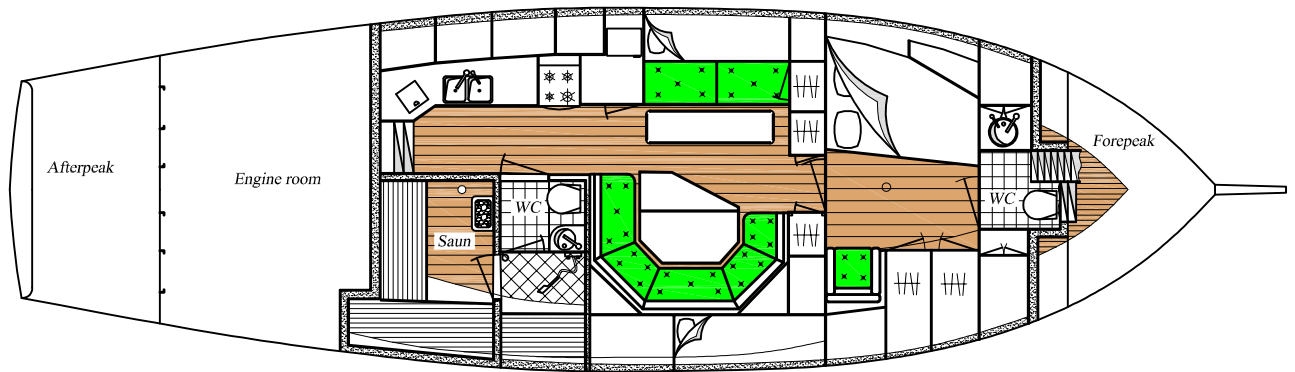
Construction of the first standard yacht was started in June 2009.

- Main characteristics of the vessel:
- Overall length - 19 m
- Deck length - 16.7 m
- Width - 4.8 m
- Draft - 1.6 m
- Main sails area - 140 m<sup>2</sup>
- Engine - 85 kW
- Diesel generator - 11 kW
- Draught - 29 t
- Height from masts to draught-line - 17.5 m
- Fuel load - 1100 l (may be increased)
- Water load - 1300 l
- Drain tanks capacity - 1000 l
- Number of stationary berths - 9

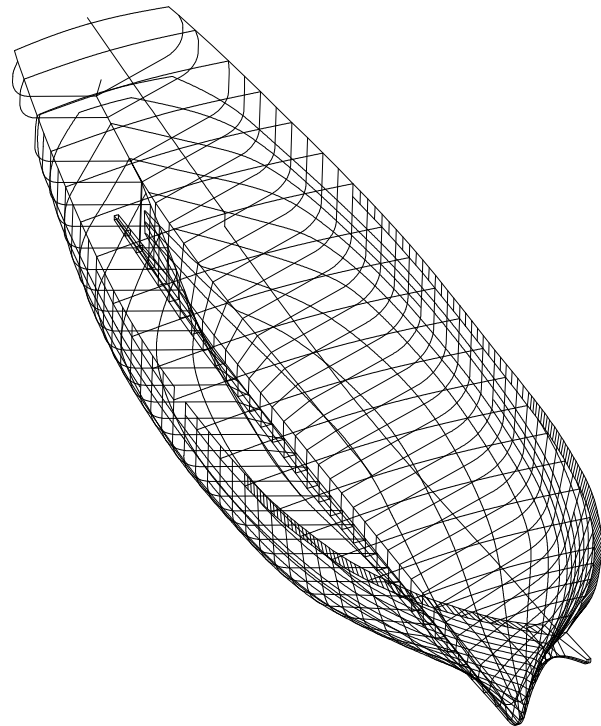
Main view



## General arrangement



## Lines



Our address:  
Vana-Narva mnt. 10 C  
744114 Maardu Estonia  
[www.ironssides.ee](http://www.ironssides.ee)

Viktor Smerichevsky - CEO  
Phone: +372 638 82 10  
Fax: + 372 638 82 01  
e-mail: [viktor@ironssides.ee](mailto:viktor@ironssides.ee)

Aleksandr Makejev - chief designer  
Phone: +372 56 56 35 34  
e-mail: [makejev@azimuut.ee](mailto:makejev@azimuut.ee)